



Supporting our student communities



NOTTINGHAMSHIRE
POLICE
PROUD TO SERVE

**STUDENT
FOCUS**

Contents

04 Welcome to Nottinghamshire

05 We're here for you

06 University Policing teams

10 Notts Alerts

12 Get home safely

13 Stay safe at night

14 Ask for Angela

15 Safe taxi scheme

16 Burglary prevention

18 Keep your stuff safe

20 Bike theft

21 Not sure? Don't open the door

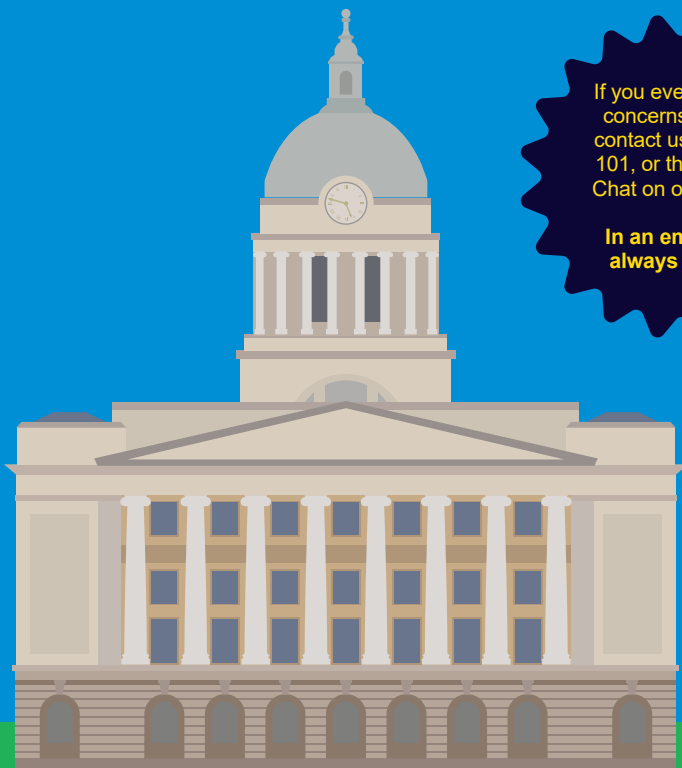
22 Fraud prevention

24 Sextortion

26 Hate crime

27 Anti-social behaviour

28 Recruitment



If you ever have any concerns, you can contact us by calling 101, or through Live Chat on our website.

In an emergency always dial 999.

Welcome to Nottinghamshire

This information guide has been designed to support you during your time in Nottinghamshire.

As a member of our student community, we welcome you to the culturally diverse, vibrant, and exciting city of Nottingham. As your local police force, we are proud to serve you as a member of the Nottinghamshire community.

We want you to enjoy everything our city and county has to offer while remembering your safety is of paramount importance.

The information contained within this guide provides information across a variety of topics which we hope you will find helpful.

We're here for you...

City police stations

To report a crime in person, visit one of our police stations.

Your local police stations are:

- **Byron House**
4 Maid Marian Way, NG1 6HS
- **Radford Road**
Radford Road, NG7 5GX
- **Beeston**
Foster Avenue, NG9 1AB

Live Chat

Live Chat gives you the power to report non-emergency crimes if you are uncomfortable speaking over the phone.

**Available 7am - 10pm,
seven days a week.**

Access via our website:
www.nottinghamshire.police.uk



Contact 999 for emergencies and 101 for non-emergencies.

Nottingham Trent University

Policing team



Nottingham Trent University
PC Alex Leggett (left)
PCSO Martin Fisher (right)

Find them at Terrace Royal

NTUpolice@notts.police.uk

Get to know your student officers

What does a day in your role look like?

We support students every day in any way we can. We liaise with the NTU community liaison and student accommodation support teams, we plan events and review incidents and crimes that may involved students.

What inspired you to become a police officer or police community support officer, and why did you choose to work on a university campus?

PCSO Martin Fisher: "I wanted to put my past life experiences to good use and utilise my knowledge to help students by supporting and offering advice. My granddaughter was once a university student."

PC Alex Leggett: "I was inspired by serving family and friends to join the police after hearing their stories about making a difference in someone else's worst times. Knowing that you've helped is rewarding, sometimes just by listening and caring can have a huge impact on someone's life. I applied for the University Policing team as after ten years of responding to crimes that affect students, I knew that even more could be done through joint partnership working to safeguard the student community."

What is the biggest reward of policing on a university campus?

Receiving positive news and thank you's from students especially revisiting students who have been unfortunate enough to be a victim or a witness to a crime. Offering advice, support and guidance especially to international students by informing them that we are here to help.

How do you collaborate with the university and student groups?

We attend meetings and email our details to help to share information about our role and how we can support students.

What resources are available for students who have experienced a crime or feel unsafe?

We try and visit students who have been a victim of crime to reassure and support them and signpost them to supporting agencies. We hand out student information booklets like this one, provide face to face advice and also give out personal attack alarms and window alarms.

What do you think is the most important thing for students to know about their safety on campus?

We are here for reassurance, support and to help them if they need it. Most importantly, how to contact and report a crime or an incident to the police either in an emergency or non-emergency – see pg5!

How does the department stay informed about current trends and issues affecting university communities?

We are kept up to date through regular university meetings and also through our Nottinghamshire Police colleagues.

University of Nottingham Policing team



University of Nottingham
PCSO Paula Hipkiss (left)
PC Nick Lewis (right)

Find them at Lenton Hurst

UONpolice@notts.police.uk

Get to know your student officers

What does a day in your role look like?

Our office is based at Lenton Hurst on main campus and we are here to support and offer advice to students and staff at the University of Nottingham. You will see us on patrol at all campus locations, attending events and we generally try to be easily accessible to all. Stop us, talk to us, ask for advice or support, after all we are here to help and support you.

What inspired you to become a police officer or police community support officer, and why did you choose to work on a university campus?

PCSO Paula Hipkiss: "I originally worked as an enquiry officer at a local police station on the front counter. I saw the PCSO role advertised 16 years ago and wanted to be an unheard voice for the young people of the area I worked in, so I applied. The University role was created in collaboration with the University of Nottingham, and I just knew it was the right move for me."

PC Nick Lewis: "I wanted to become a police officer as I felt I could make a real difference to the communities I served. I enjoy meeting new people and making a real positive impact on people's lives as well as working in a dynamic and challenging environment. Having worked in front line policing for almost ten years, I chose to work as part of the University Policing team as I wanted a new challenge providing an enhanced service supporting Nottingham's valued student community, a role that had not existed previously."

What is the biggest reward of policing on a university campus?

We get to work in the most amazing spaces and talk to students and staff whilst patrolling. We love all the events so we can pass on advice, whether it's crime prevention or personal safety tips. We love seeing the students at the end of their journey being awarded their degrees in front of family and friends. It's a true honour to be a part of this community.

How do you collaborate with the university and student groups?

We have been incredibly fortunate to be working alongside the security teams on campus and the community engagement teams off campus. Everyone is so welcoming and offer us opportunities to work alongside the students and student groups. It is a great collaboration and we feel lucky to be part of this.

What resources are available for students who have experienced a crime or feel unsafe?

Speak to us, email us, or use Live Chat on the Nottinghamshire Police website. You are never alone; we can signpost you to the most amazing services the University of Nottingham has to offer. We can even register your laptops, mobiles, and cycles for you. We offer scam advice, personal safety advice, crime prevention advice and just be a support where needed if you do unfortunately become a victim of crime.

What do you think is the most important thing for students to know about their safety on campus?

Campus is a safe area but as we say to all students, take the same safety precautions as you would at home as being at university is no different. Please lock doors and windows and don't let people tailgate you into halls. Plan your routes around well-lit roads so that you know where you are going and where possible go with friends. Keep your mobile phone charged and preferably in pockets and bags. Save the phone numbers for both the police and campus security.

How does the department stay informed about current trends and issues affecting university communities?

We are made aware daily of any incidents of note. We check all the police resource systems to ensure anyone who has reported crime is offered support. We liaise with security on campus and the engagement team off campus and try to be as updated as we possibly can be, to ensure our students get the best possible service from us.



NOTTS ALERTS

Let's talk

If it matters to you, it matters to us

Notts Alerts is the community messaging service for the whole of Nottinghamshire, providing you with updates on the issues that matter to you.

You can also connect with your local policing team and tell us how we can best protect your community.

Sign up today



Get home safely



Pre-book a taxi or get one from the taxi rank



Plan your journey home, **keep to main roads** and well lit routes



Don't wander off
- stay with friends



Stay vigilant
on public transport

Stay safe at night

Whether you go out clubbing or to the local pub with your mates, there are a few things you should think about to make sure you have a good and safe night out, especially if alcohol is involved.

- Make sure your phone is charged before you leave
- Put your keys, ID and other valuables somewhere you won't lose them
- Tell your friends where you're going before you head to the toilet or bar
- Don't accept a drink from someone you don't know
- Leave with your friends and make sure everyone knows how and when each of you are getting home
- Don't leave drinks unattended
- Don't unlock your phone on the request of strangers
- Be vigilant when using your phone



#Ask for Angela

Staying safe when going out is a priority for everyone, and Nottinghamshire has a variety of safety schemes, one being 'Ask for Angela'.

This scheme aims to prevent sexual harassment and assault by providing a discreet way for people to ask for help.

Venues participating in the scheme will display identifiable posters, signalling that help is available at the bar if needed, just ask for Angela.

“HI I'M ANGELA,

ARE YOU ON A DATE THAT ISN'T WORKING OUT? DO YOU FEEL LIKE YOU'RE NOT IN A SAFE SITUATION?

IS YOUR DATE NOT WHO THEY SAID THEY WERE ON THEIR PROFILE? DOES IT ALL FEEL A BIT WEIRD?

IF YOU GO TO THE BAR AND ASK FOR 'ANGELA' THE BAR STAFF WILL KNOW YOU NEED SOME HELP GETTING OUT OF YOUR SITUATION AND WILL CALL YOU A TAXI OR HELP YOU OUT DISCREETLY - WITHOUT TOO MUCH FUSS

”

Scan the QR code to find out more



TOP TIPS

Safe taxi scheme

Are you a student with no cash to get home?

Both Nottingham Trent University and the University of Nottingham offer safe taxi schemes to ensure you can get home safely.

Nottingham Trent University

UNICAB emergency taxi scheme

Call

0115 9700 700

Quote

“safe taxi scheme” and show your student ID

Pay

Pay back later (NTSU will email you)

University of Nottingham

Nottingham Cars safe taxi scheme

Call

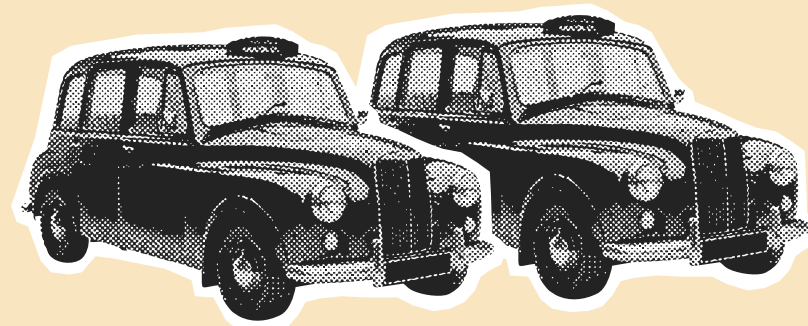
0115 950 0500 or text 80818

Quote

“UoN emergency taxi scheme” and show your student ID

Pay

At the Student Union reception the next day



While students are away burglars play



Windows and doors

When you go out, always close and lock external doors and windows, even if you are just going out for a short time.



Keys

Ensure your keys are kept in a safe place out of sight and away from your letterbox.



Valuables

Don't leave your valuables in view of doors or windows, day or night.



Curtains and blinds

Close curtains and blinds at night.



Lighting

Make your home look occupied while out - for example leave a light on.



Safety at home

In the unlikely event that you are at home and an intruder enters your home, call the police immediately.



Shared housing

- Don't hold the door open for people you don't know
- Never leave the communal door ajar
- If you live in halls of residence, always lock your room even if you are just going down the corridor

www.immobilise.com

**MAKE
YOUR
MARK**

**TO HELP PROTECT
YOUR PROPERTY**

Register your property
FREE and improve your
chances of getting it back
if lost or stolen

IMMOBILISE 

THE UK NATIONAL PROPERTY REGISTER

Scan the QR code
to find out more



18
www.immobilise.com

• TOP TIPS •

Keep your stuff safe

Moving house? Remember to lock cars and house doors while moving if any of your belongings are unattended.

Out and about? Keep valuables like your phone, keys and wallet inside your pockets or in bags. Don't give the opportunists the chance to take your things.

Don't write down passwords and PIN numbers.

Noticed any defects with doors or windows? Report it to your landlord.

Sign up for advice and crime alerts on www.nottsalerts.co.uk

Protect your belongings

Whilst you may not think about it, you may have lots of personal items that are very valuable to the wrong people.

To help prevent your items being stolen you can use **Immobilise**.

Immobilise is a free online service that is quick and easy to use. Any items marked with an immobiliser sticker are less likely to be targeted by burglars.

If your items were unfortunately stolen, we can help support you to return your stolen lost property.



Bike theft

Keeping your bike secure while out or at home is key to ensuring you don't become a victim of bike theft.

Lock up your bike wherever you leave it

Use a rigid lock such as a D lock

At home, lock your bike out of view and store it in a place that isn't accessible to anyone else e.g. a locked shed

Marking your bike will deter thieves and reduce your risk of becoming a victim.

Scan the QR code and register your bike in three simple steps

- Register your bike
- Mark and protect
- Apply warning label



TOP TIPS



Not sure?

Don't open the door

It's important to always be cautious and aware of who you allow into your house. Burglars and other criminals can sometimes pretend to be someone they're not to gain access to your home.

Doorstep seller

Charity worker

Workmen

- Don't let strangers into your home without checking their identity
- Don't relay any personal information
- If you have one, always put the door chain on or use the spy hole when someone calls, even if you're expecting someone

Remember:

Lock all doors, even when at home.
Use a chain or a spy hole.

Stop unknown people from entering.

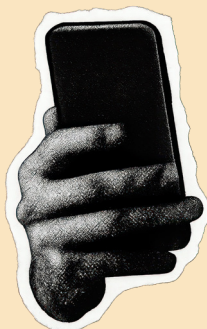
Tell the police about unwanted or suspicious callers by phoning 101.

Don't be scammed as you start student life

As a student, it's important to be aware of the various scams that fraudsters might use to target you. Here are some to watch out for:

Friend in need scam:

Scammers will text or use WhatsApp and pose as a friend or relative. They will come from a random mobile number and claim their phone is broken or lost. There will be an urgent, high pressure request for money.



Bogus landlords:

Adverts may appear on marketplace sites. Never pay a deposit before seeing a property, ensure you go through a legitimate agency.



Job advert scam:

Scammers may pose as recruiters, offering some kind of a job. It's often unclear what the job is. They will lure you in with phrases like 'no experience required'. They will ask for your bank details and personal information.



Investment scheme:

You'll be contacted out of the blue offering an easy 'make money quick scheme'. Scammers will get you to invest money into cryptocurrency by downloading various apps.

Money muling:

Scammers posing as a friend online will ask if you can have some of their money transferred into your account as theirs "is locked" and then for you to forward this on to another person. Always say no if someone asks you to use your bank account.



Phone scam:

Scammers will call you and pose as someone from your bank or the police about 'fraudulent use of your bank card'. They'll ask for your bank details including the CVV number on the back of your card and PIN. Neither your bank or the police will ask you to do this.



Hey,
like
what
you
see?

**Don't fall victim
to sextortion**

Sextortion

Do you know who you're really talking to?

Sextortion is a type of online blackmail, where criminals threaten to share your sexual photos, videos, or information. It's a financially motivated sexual extortion.

If you're chatting to people online:

- Review your privacy settings
- Be cautious about new people you meet online, they might not be who they say they are
- Never share sexual images of yourself if you feel pressured to do so

If you're a victim of sextortion, it's not your fault.

Report it:

We understand that it might be difficult to report this type of crime to us. But we're here to listen and support you in any way we can.

- Call 101
- Online at www.nottinghamshire.police.uk

Don't panic, help and support is available.
Scan the QR code to find out more.





Hate crime

Nottinghamshire is a diverse and vibrant county, with a range of cultures, religions and backgrounds.

Hate crime can be disguised under many names; homophobia, Islamophobia, or racism, to name a few. But whatever name it's taking, it's still a hate crime.

All hate crime is serious, everyone has the right to live without fear of prejudice.

If you have been a victim of a hate crime or have witnessed a hate crime in Nottinghamshire, report it by calling 101 or online via: www.nottinghamshire.police.uk/hatecrime

• TOP TIPS •



Anti-social behaviour

Anti-social behaviour can take many forms and can include anything from being excessively loud, to damaging property or verbally abusing others. It's important to be aware of how our actions may affect those around us and to try to minimise any negative impact we may have in our communities.

E-scooters and e-bikes have increased in popularity, but their misuse can lead to anti-social behaviour. Riding an e-scooter or e-bike on pavements, in pedestrian areas, or in places where they are not allowed can be dangerous and disruptive to others.

Additionally, riders who do not follow traffic rules and regulations, such as running red lights or riding on the wrong side of the road, riding under the influence of alcohol or drugs are not only breaking the law but also putting themselves and others at risk of accidents and injuries.

It's important to remember that while having fun with friends is great, it's also important to be considerate of those around us.

You don't have to be an officer to serve the community!



We offer a variety of positions from officer roles, staff roles and apprenticeships where you can learn and earn.

Check out the variety of roles we offer in various departments from Citizens in Policing, Business Support to Contact Management.

**Scan the QR code to
visit our careers page**





www.nottinghamshire.police.uk